



# NRB

modular building specialists

## GLEGG WATER GUELPH, ON

Building Size: 10,000 square feet  
Building Start: December, 1995  
Building Complete: February, 1996

## PROJECT PROFILE

Commercial  
Project: #964002



*The building was designed, built, shipped and installed during the winter months, quickly and efficiently so the owner could better manage their growing staff and business needs.*

## PROJECT OVERVIEW:

To accommodate a rapidly growing business, the company needed additional engineering and executive office space, as well as a large cafeteria for staff. The challenge was to get the facility up and running in a very short timeframe, and without compromise to the owner's important corporate image, quality or desired building features and finishes. NRB completed the project, ready for occupancy in less than 3 months.

**NO LIMITS... ONLY POSSIBILITIES**

**NRB Inc.** 115 South Service Road W., P.O. Box 129, Grimsby, Ontario L3M 4G3 Tel: 905.945.9622 Toll Free: 800.465.7594  
**NRB (USA) Inc.** 440 Wenger Drive, Ephrata, PA 17522 Tel: 717.733.1794 Toll Free: 877.455.2160  
Web: [www.nrb-inc.com](http://www.nrb-inc.com) Email: [inquiries@nrb-inc.com](mailto:inquiries@nrb-inc.com)



# NRB

modular building specialists

## GLEGG WATER GUELPH, ON

Building Size: 10,000 square feet  
Building Start: December, 1995  
Building Complete: February, 1996

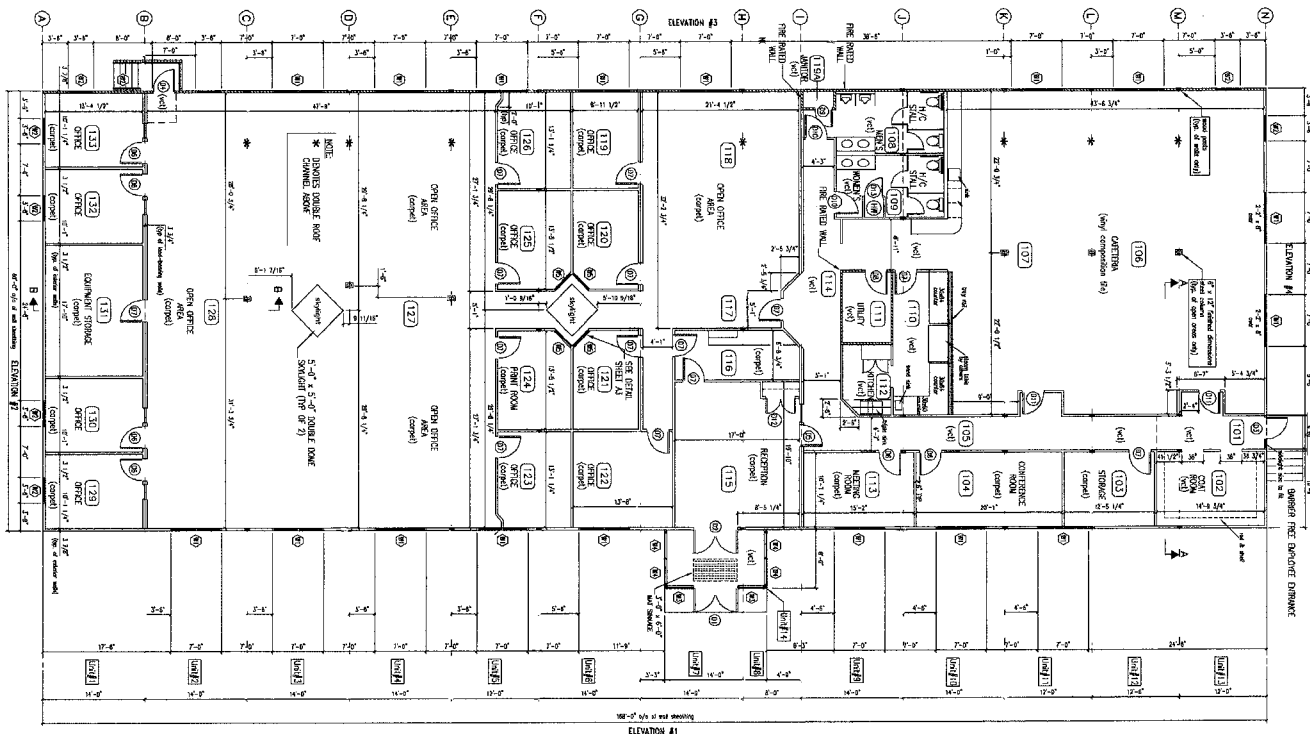
## PROJECT PROFILE

Commercial  
Project: #964002

### FEATURES & BENEFITS:

- Fully glazed vestibule entranceway is an architectural feature and also acts as a buffer to provide better energy efficiency for the building.
- White stucco exterior with the vivid blue trim presents the clean lines, modern appearance and overall look the client desired.
- Interior is thoughtfully designed with angled walls and etched glass at office entrances and includes skylights for a warm yet bright working environment.
- All 14 building modules were completed at the plant and delivered to the site over 90% complete – so the owner could move in quickly and avoid major downtime.

### FLOOR PLAN:



FLOOR PLAN  
SCALE: 1/8" = 1'-0"

Glegg Water #964002

## NO LIMITS... ONLY POSSIBILITIES

NRB Inc. 115 South Service Road W., P.O. Box 129, Grimsby, Ontario L3M 4G3 Tel: 905.945.9622 Toll Free: 800.465.7594  
NRB (USA) Inc. 440 Wenger Drive, Ephrata, PA 17522 Tel: 717.733.1794 Toll Free: 877.455.2160  
Web: [www.nrb-inc.com](http://www.nrb-inc.com) Email: [inquiries@nrb-inc.com](mailto:inquiries@nrb-inc.com)