



# Innovative Space Solutions Convenience Store Project Summary #1055004

NO LIMITS... ONLY POSSIBILITIES

## SHELL CANADA YONGE & PONTZ, TORONTO

**SIZE: 31' x 55' 3 sections**  
**SQUARE FOOTAGE: 1715sf**



### PROJECT SUMMARY

Corporate sites very often are on tight urban street corners. With this 3 section modular building shipped to site and set on the foundations all in one day, the site work was greatly minimized with store opening approximately 30 days after receiving building permit.

The steel and concrete structure, and standard conventional construction of studs and drywall, makes NRB's modular buildings un-noticeably permanent and allowing us to customize exterior and interior finishes to each clients image and design standards.

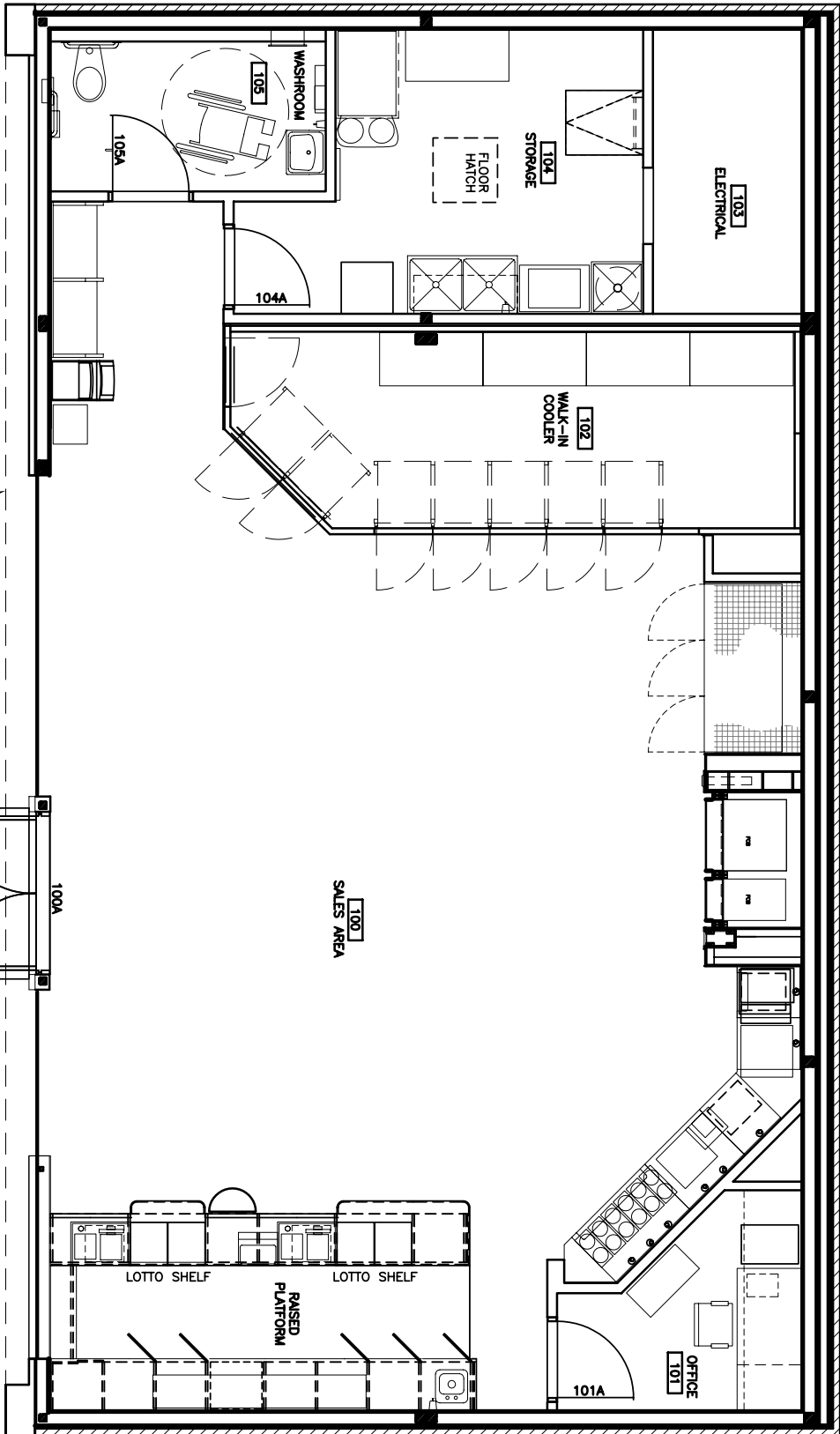


NRB Inc. 115 South Service Rd. W., P.O. Box 129, Grimsby, ON L3M 4G3

☐Tel. (905) 945-9622 ☐Fax (905) 945-2003

☐Email: [inquiries@nrb-inc.com](mailto:inquiries@nrb-inc.com)

☐Website: [www.nrb-inc.com](http://www.nrb-inc.com)



**FLOOR PLAN**

SCALE: 1 : 50