

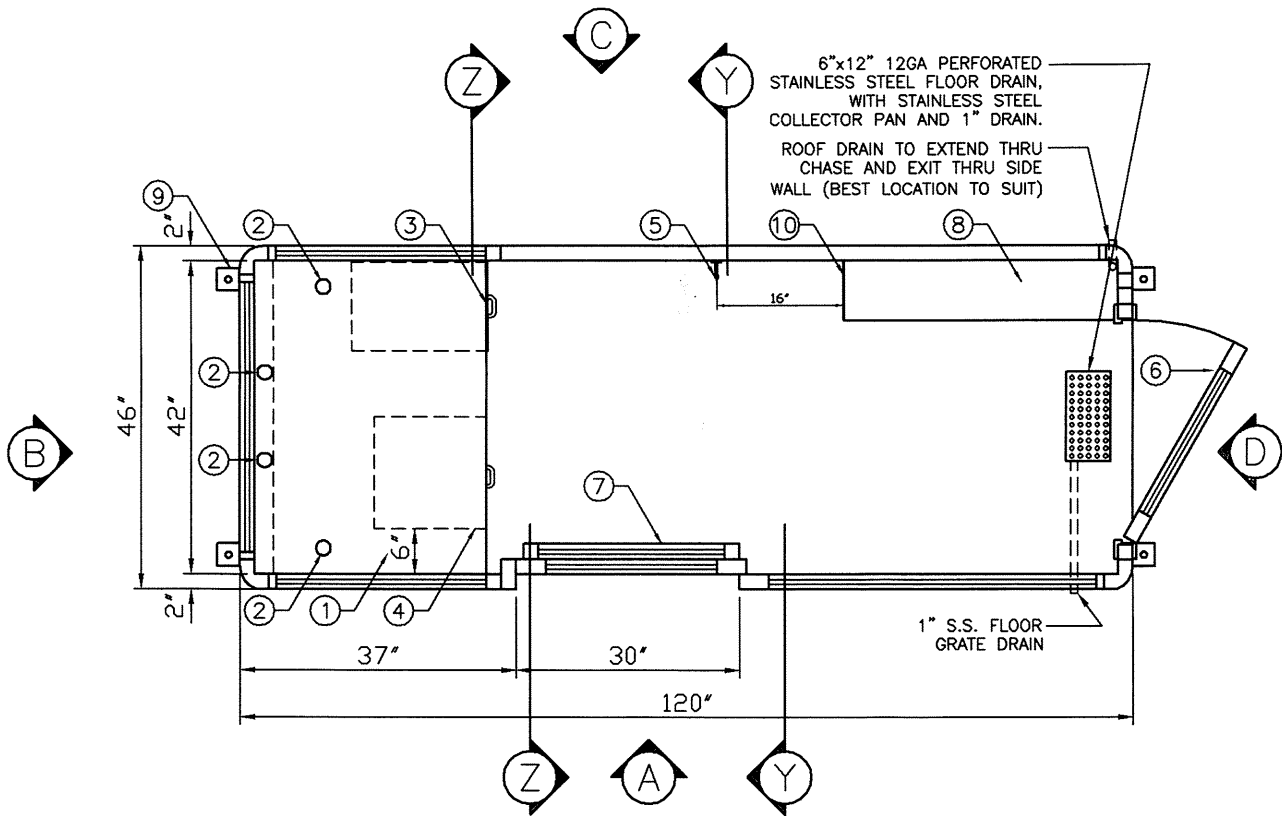


**Blue Water Bridge
Sarnia, Ontario**

Size: 12 units each measuring 4 feet x 10 feet
Date of Approval to Proceed: May 20, 1995
Date of Completion: July 13, 1995

Project Information: When the International Panel overseeing the operations for this International border crossing, decided to upgrade the Canadian side of the bridge, they chose Canada Kiosk's stainless steel kiosks. Delivered in the required time frame, their unmatched quality ensured a fast and easy installation on prepared pads.
Note the round corners on the building itself and the parapet which hides a high powered air delivery system designed to supply clean air from above the canopy.





FLOOR PLAN

NOTES:

1. 30" DEEP x 40" WIDE STAINLESS STEEL COUNTER 37 1/2" ABOVE FLOOR
 2. 2" GROMMETED HOLE IN COUNTER, 4-REQ'D
 3. 3 STACKED STAINLESS STEEL STORAGE DRAWERS (13 1/2"w x 11"h x 18"d I.D.), COMPLETE WITH HEAVY DUTY BALL BEARING ROLLERS & DRAWER PULL
 4. STAINLESS STEEL PULL OUT SHELF 1"x 15"x 15" COMPLETE WITH HEAVY DUTY BALL BEARING ROLLERS & DRAWER PULL
 5. STANDARD COAT HOOK (MOUNTED 66" ABOVE FINISHED FLOOR)
 6. 30" WIDE SWINGING STAINLESS STEEL DOOR WITH SAFETY GLAZING, WEATHERSTRIPPING, BALL BEARING BUTTS, CUSH-N-STOP HYDRAULIC CLOSER AND KEY-IN-KNOB LOCKSET
 7. 30" WIDE SLIDING STAINLESS STEEL DOOR WITH SAFETY GLAZING, WEATHERSTRIPPING, HEAVY DUTY TRACK, BALL BEARING HANGERS, MAXIMUM SECURITY HOOKBOLT, HEAVY DUTY THUMB LOCK AND REINFORCED DOOR JAMB, SIDE SLIDING GLASS WINDOW INCLUDED COMPLETE WITH HEAVY DUTY BALL BEARING HANGERS AND TRACK
 8. 37"x 9" COMBINED MECHANICAL/ELECTRICAL/COMMUNICATION CHASE
 9. 3"x 3"x 1/4" ANCHOR CLIP, WELDED TO BASE AT GRADE, WITH 1" ANCHOR BOLT HOLE, 4-REQ'D. ONE EACH CORNER, ANCHOR BOLTS NOT INCLUDED
 10. 2 PHONES, 5' ABOVE FLOOR, MOUNTED ON 9"x 18"x 1/8" STEEL PANEL
- A. ALL WINDOWS TO BE 3/8" TINTED TEMPERED EXTERIOR + 1/4" AIR SPACE + 3/16" CLEAR TEMPERED INTERIOR c/w FORD SUNGLASS LOW-E COATING ON 3rd SURFACE IN SEALED UNIT (TYP.)
- B. BOOTH FLOOR TO HAVE ANTI-FATIGUE MAT
- C. ALL STAINLESS STEEL ON INTERIOR OF BOOTH TO BE NATURAL FINISH
- D. UNITS TO BE DESIGNED SUCH THAT THEY CAN BE LIFTED FROM THE BOTTOM BY FORK LIFT