



NRB

modular building specialists

Bryn Athyn College

Montgomery County, Willow Grove, PA

Building Size: 3 Buildings, 8,114 sq. ft. / each

Building Start: December 2009

Building Complete: August 2010

PROJECT PROFILE

DORMITORY

Project Profile # 2095003



NRB's off-site construction and expedited construction schedule provided the college with the dormitories required for their fall start date.

PROJECT OVERVIEW:

New dormitories ready for the college's fall start date were an essential component of the campus expansion plan. NRB's off-site construction and expedited construction schedule ensured the college would have their student accommodations in time and with less site and noise disturbance. Using NRB's permanent modular technology the three-story dormitories were built with structural steel post and beam construction and pre-poured concrete floors. The dormitories will house 90 new students in a total of three separate buildings that highlight an "old world" inspired exterior façade. Each building consists of six, five-student suites complete with three bedrooms, bathroom and an open concept 'living space' design which features a living room, dining area, kitchen with custom solid cherry cabinets, quartz countertops and stainless steel appliances. The faux chimneys house the mechanicals, allowing for optimal space utilization within each suite. The chimneys were fabricated by NRB at the plant, erected on site and then cut stone and brick were applied to complete the appearance of a massive built chimney.

NO LIMITS... ONLY POSSIBILITIES

NRB INC., 115 South Service Road W., P.O. Box 129, Grimsby, Ontario L3M 4G3 Tel: 905.945.9622 Toll Free: 800.465.7594

NRB (USA), Inc., 440 Wenger Drive, Ephrata, PA 17522 Tel: 717.733.1794 Toll Free: 877.455.2160

Web: www.nrb-inc.com • **Email:** inquiries@nrb-inc.com



NRB

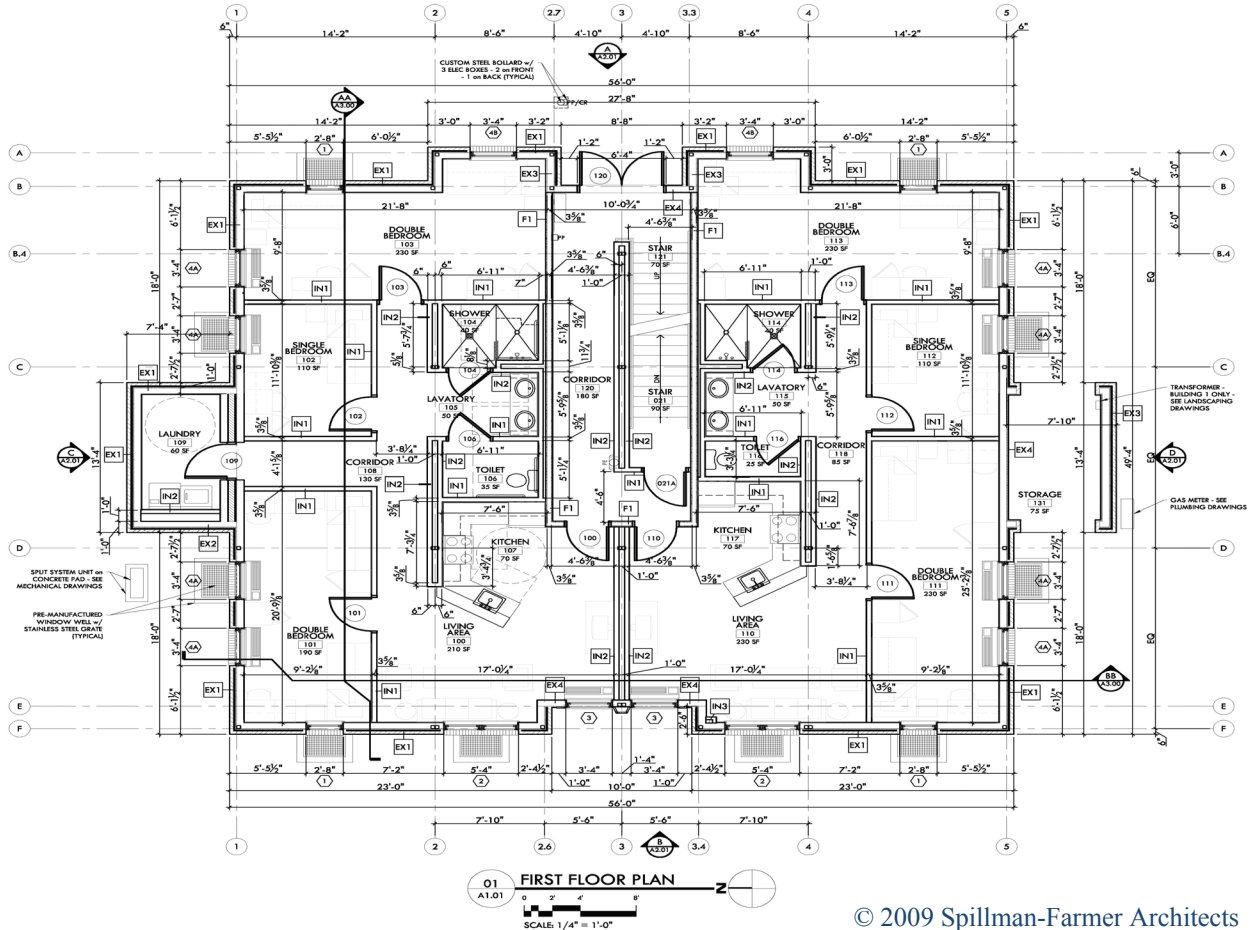
modular building specialists

Bryn Athyn College
 Montgomery County, Willow Grove, PA
 Building Size: 3 Buildings, 8,114 sq. ft. / each
 Building Start: December 2009
 Building Complete: August 2010

PROJECT PROFILE

DORMITORY

Project Profile # 2095003



© 2009 Spillman-Farmer Architects

NO LIMITS... ONLY POSSIBILITIES

NRB INC., 115 South Service Road W., P.O. Box 129, Grimsby, Ontario L3M 4G3 Tel: 905.945.9622 Toll Free: 800.465.7594
 NRB (USA), Inc., 440 Wenger Drive, Ephrata, PA 17522 Tel: 717.733.1794 Toll Free: 877.455.2160
 Web: www.nrb-inc.com • Email: inquiries@nrb-inc.com