



NRB

modular building specialists

CANCER CARE ONTARIO

Ottawa, ON

Building Size: 1,1810 square feet

Building Start: October 2007

Building Complete: December 2007

PROJECT PROFILE

Health Care

Project Profile # 1075009



Considering the limited space for construction on a hospital site, and the interruptions that are caused by conventional construction, modular pieces built off site, delivered in one day and pieced together in minimal days on site was an enormous asset to this project.

PROJECT OVERVIEW:

This steel and concrete building was designed to fit in between existing hospital structures over existing underground tunnels to accommodate the immediate need for a temporary cancer treatment facility. The facility was designed and engineered for practicality and ease of installation and re-installation at a new hospital location when it's required. CCO has a second facility in Barrie Ontario and it will serve the same purpose.

NO LIMITS... ONLY POSSIBILITIES

NRB INC., 115 South Service Road W., P.O. Box 129, Grimsby, Ontario L3M 4G3 Tel: 905.945.9622 Toll Free: 800.465.7594
NRB (USA), Inc., 440 Wenger Drive, Ephrata, PA 17522 Tel: 717.733.1794 Toll Free: 877.455.2160
Web: www.nrb-inc.com • Email: inquiries@nrb-inc.com



CANCER CARE ONTARIO

Ottawa, ON

Building Size: 1,810 square feet

Building Start: October 2007

Building Complete: December 2007

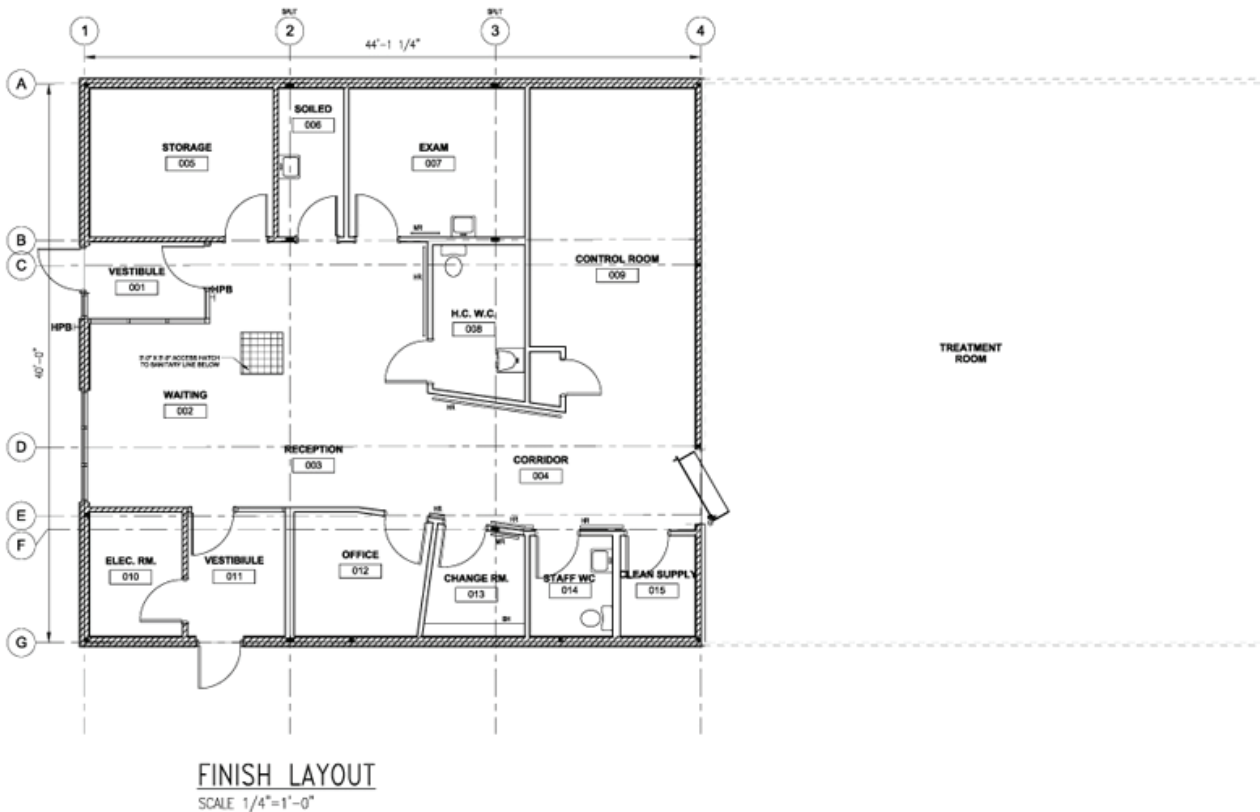
PROJECT PROFILE

Health Care

Project Profile # 1075009

FEATURES & BENEFITS:

- Front ancillary space includes a reception area with skylights, exam rooms, washrooms, lunchroom, offices and control area.
- The rear 2 storey section houses the linear accelerator that delivers patient treatment, and is also designed to be relocated to another location.
- Waiting area and reception was kept open for the appearance of space and interior sun tunnels where added to achieve maximum daylighting
- Structural steel post and beam construction and included a 3" thick concrete floor, steel stud walls with wrapped R20 rigid insulation



NO LIMITS... ONLY POSSIBILITIES