



NRB

modular building specialists

Department of Supply & Services

Alberta

Building Size: 36' x 84' Two Story

Building Start: March 1991

Building Complete: March 1991

PROJECT PROFILE

INDUSTRIAL

Project Profile # 91-332



The two storey In-plant Office was designed and built to fit around the existing concrete pillars.

PROJECT OVERVIEW:

When the Department of Supply and Services built a new warehouse in Alberta, they contacted NRB to manufacture 5 various sized NCP-1000 Panelized In-Plant Buildings. The two story In-Plant Office featured above had to be designed and built to fit around the existing warehouse concrete pillars and to conform to the Department of Supply and Services specific needs. The offices were shipped to Alberta in knockdown form and assembled on site by NRB.

NO LIMITS... ONLY POSSIBILITIES

NRB INC., 115 South Service Road W., P.O. Box 129, Grimsby, Ontario L3M 4G3 Tel: 905.945.9622 Toll Free: 800.465.7594
NRB (USA), Inc., 440 Wenger Drive, Ephrata, PA 17522 Tel: 717.733.1794 Toll Free: 877.455.2160
Web: www.nrb-inc.com • **Email:** inquiries@nrb-inc.com



NRB

modular building specialists

Department of Supply & Services

Alberta

Building Size: 36' x 84' Two Story

Building Start: March 1991

Building Complete: March 1991

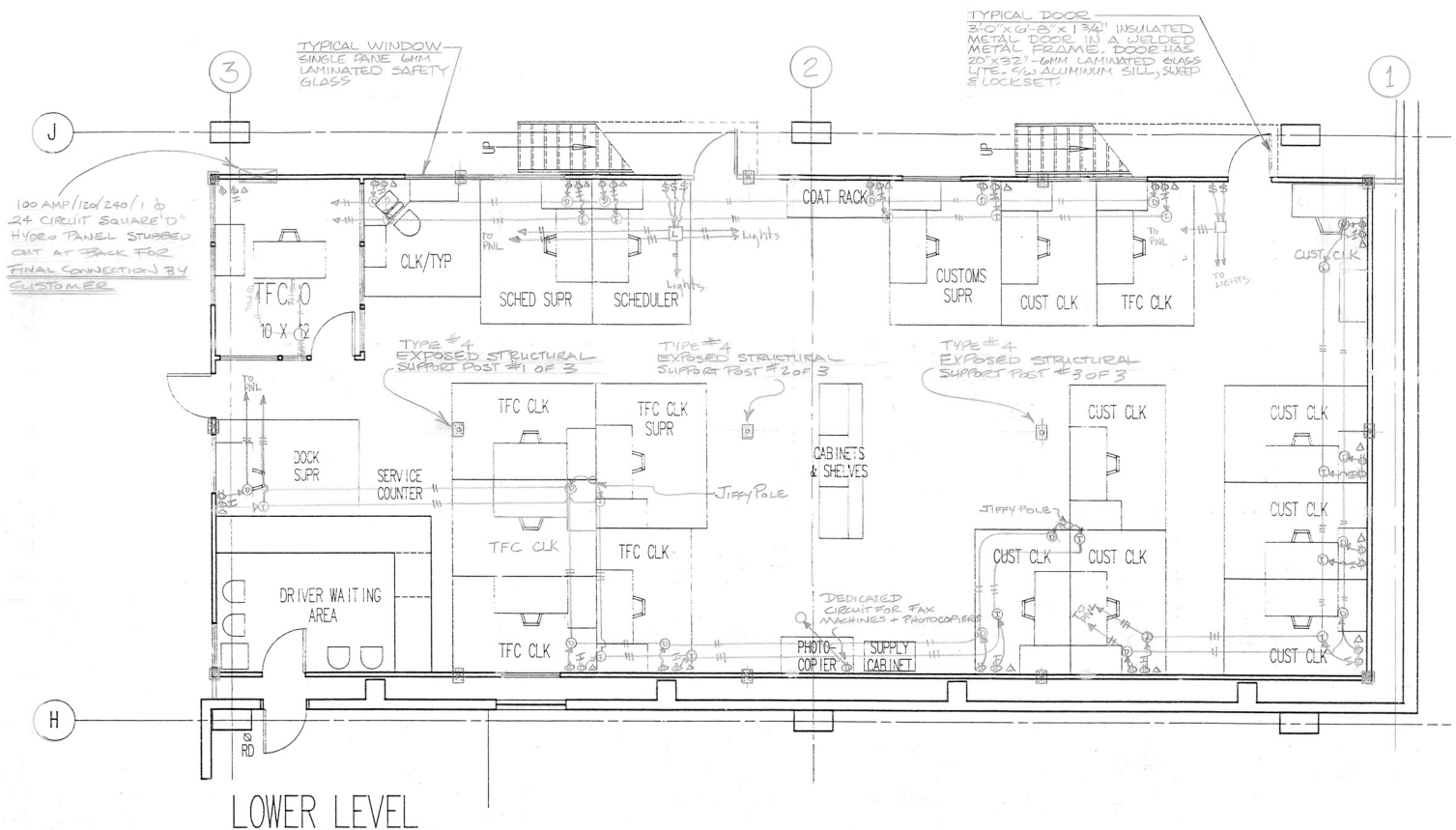
PROJECT PROFILE

INDUSTRIAL

Project Profile # 91-332

FEATURES & BENEFITS:

- Non-combustible steel framed panelized system
- Structural steel mezzanine between floors for support, 1st story can be removed without disturbing 2nd story
- Pre-finished steel exterior
- Vinyl covered gypsum board interior wall finish with vertical battens at joints
- Pre-wired with duplex outlets, switches, electrical panel
- Sprinkler system installed



NO LIMITS... ONLY POSSIBILITIES

NRB INC., 115 South Service Road W., P.O. Box 129, Grimsby, Ontario L3M 4G3 Tel: 905.945.9622 Toll Free: 800.465.7594

NRB (USA), Inc., 440 Wenger Drive, Ephrata, PA 17522 Tel: 717.733.1794 Toll Free: 877.455.2160

Web: www.nrb-inc.com • Email: inquiries@nrb-inc.com