



NRB

modular building specialists

THOMAS FORD ELEMENTARY SCHOOL READING, PA

Building Size: 24,000 square feet

Building Start: April, 2006

Building Complete: August, 2006

PROJECT PROFILE

Educational

Project: #2065010



“NRB not only met our expectations, but exceeded them. Two things stand out most – their professionalism and willingness to help – taking the time to make a good project even better. The project success was due to teamwork, quality of work plus the fact that the surrounding community was impacted over a much shorter period of time and the school was open in less than half the time!”

– Sylvia Deye, Dimension Architecture

PROJECT OVERVIEW:

When the Reading School District needed two new Magnet Schools in their city, they faced two challenges. The first was how to get the schools designed, built and operational in less than a year and the second was to ensure they could secure the State funding available for permanent school construction. Temporary stock classroom space was considered because it met the timeline, but did not meet the funding requirements or the community's impression of quality space for the students. After researching many options, the School District's architect looked to NRB to help her meet the need for speed, quality and permanent modular construction so they could secure the funds they required.

NO LIMITS... ONLY POSSIBILITIES

NRB Inc. 115 South Service Road W., P.O. Box 129, Grimsby, Ontario L3M 4G3 Tel: 905.945.9622 Toll Free: 800.465.7594

NRB (USA) Inc. 440 Wenger Drive, Ephrata, PA 17522 Tel: 717.733.1794 Toll Free: 877.455.2160

Web: www.nrb-inc.com **Email:** inquiries@nrb-inc.com



NRB

modular building specialists

THOMAS FORD ELEMENTARY SCHOOL READING, PA

Building Size: 24,000 square feet

Building Start: April, 2006

Building Complete: August, 2006

PROJECT PROFILE

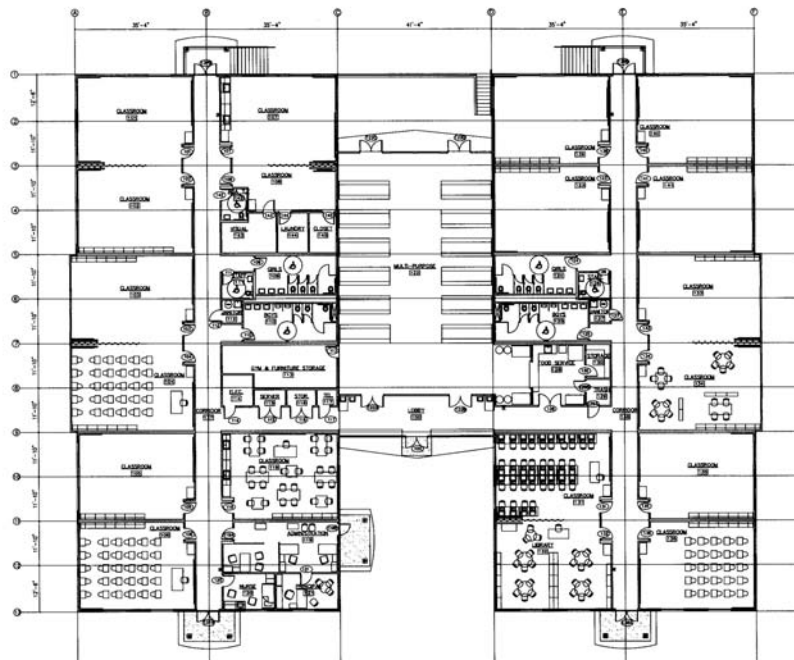
Educational

Project: #2065010

FEATURES & BENEFITS:

- With the exception of the multi-purpose room, the school was built off site at the NRB plant, completely assembled to ensure fit and finish was exact, then disassembled and shipped to the site in 56 pieces.
- The NRB 5000 series type construction with its post and beam structural design builds in lifting eyes, so placing the units on the foundations by crane is fast and efficient.
- Interior finishes and features include drywall, taped, filled and painted to the school's color choices, and ceramic tiled floors and walls in the bathrooms.
- Exterior features a split face block foundation, stucco walls with a sunburst design over the main entry, and painted corrugated steel panels above a horizontal accent band. Barrel vault features over entrances were built by NRB.
- The multi-purpose room is created with custom columns supporting a panelized wall system for the 14-foot high by 42 foot span clerestory exposed steel pitched truss roof system, built on site by NRB.
- The multi-purpose room ceiling utilizes acoustical type steel roof decking sandwiched with rigid insulation and fiberglass roof shingles and features acoustical deck finish, spiral ductwork and sound baffles.

FLOOR PLAN:



NO LIMITS... ONLY POSSIBILITIES

NRB Inc. 115 South Service Road W., P.O. Box 129, Grimsby, Ontario L3M 4G3 Tel: 905.945.9622 Toll Free: 800.465.7594

NRB (USA) Inc. 440 Wenger Drive, Ephrata, PA 17522 Tel: 717.733.1794 Toll Free: 877.455.2160

Web: www.nrb-inc.com Email: inquiries@nrb-inc.com