



# NRB

modular building specialists

## MATHEMATICS, CIVICS & SCIENCES CHARTER SCHOOL OF PHILADELPHIA PHILADELPHIA, PA

Building Size: 12,420 square feet  
Building Start: September, 2002  
Building Complete: January, 2003

## PROJECT PROFILE

Educational  
Project: #N25050



*The entire four story building was erected in place in just 14 days, an accomplishment available only with the modular construction delivery method!*



## PROJECT OVERVIEW:

When this Charter School needed a new, modernized addition to accommodate their growing enrolment, they faced many obstacles. The school site is located in a busy urban area of Philadelphia, where the footprint of land and access to it are extremely limited. Construction on site would generate months of chaos to the school and the surrounding inner-city community, causing disruption and safety and security concerns. The School looked to off-site construction and NRBs advanced design technology as an alternative.

**NO LIMITS... ONLY POSSIBILITIES**

**NRB Inc.** 115 South Service Road W., P.O. Box 129, Grimsby, Ontario L3M 4G3 Tel: 905.945.9622 Toll Free: 800.465.7594  
**NRB (USA) Inc.** 440 Wenger Drive, Ephrata, PA 17522 Tel: 717.733.1794 Toll Free: 877.455.2160  
**Web:** [www.nrb-inc.com](http://www.nrb-inc.com) **Email:** [inquiries@nrb-inc.com](mailto:inquiries@nrb-inc.com)



**NRB**  
modular building specialists

**MATHEMATICS, CIVICS & SCIENCES  
CHARTER SCHOOL OF PHILADELPHIA  
PHILADELPHIA, PA**

Building Size: 12,420 square feet  
Building Start: September, 2002  
Building Complete: January, 2003

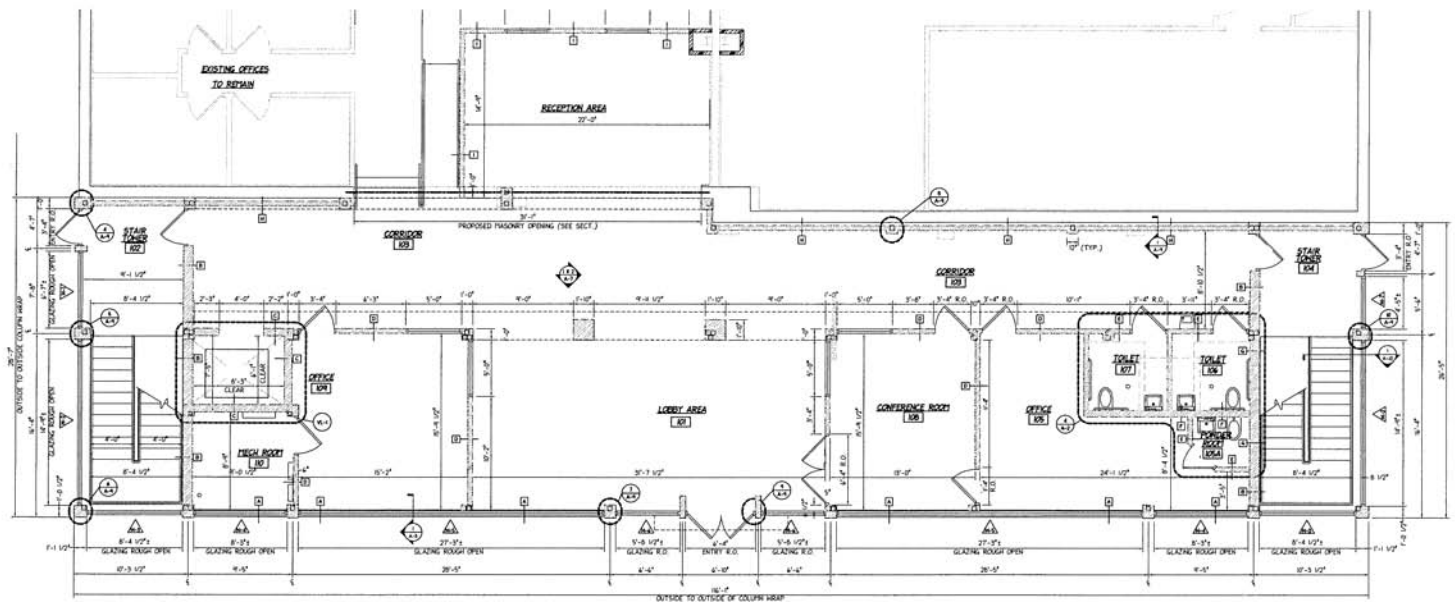
**PROJECT PROFILE**

Educational  
Project: #N25050

**FEATURES & BENEFITS:**

- The four-story structure was built using a structural steel post and beam design with pre-poured concrete floors, giving the school the permanence and performance of conventional construction but in a fraction of the time, and all without compromise to layout, program requirements or architectural expression.
- Extensive use of curtain-wall with tinted glazing, architectural aluminum and exposed aggregate panels from top to bottom give the school the contemporary look they were looking for.
- The building was transported to site in prefabricated modules, about 85% complete, and the setting of the modules was carefully choreographed so that crane time and neighborhood disturbance were kept to a minimum.

**FLOOR PLAN:**



**NO LIMITS... ONLY POSSIBILITIES**

**NRB Inc.** 115 South Service Road W., P.O. Box 129, Grimsby, Ontario L3M 4G3 Tel: 905.945.9622 Toll Free: 800.465.7594  
**NRB (USA) Inc.** 440 Wenger Drive, Ephrata, PA 17522 Tel: 717.733.1794 Toll Free: 877.455.2160  
Web: [www.nrb-inc.com](http://www.nrb-inc.com) Email: [inquiries@nrb-inc.com](mailto:inquiries@nrb-inc.com)