



NRB

modular building specialists

BAYVIEW HILL ELEMENTARY SCHOOL RICHMOND HILL, ON

Building Size: 9,672 square feet
Building Start: April, 2007
Building Complete: June, 2007

PROJECT PROFILE

Educational
Project: # 1075006



“We knew NRB was setting new design standards with modular construction for permanent applications such as ours. The quality of construction and service provided by NRB was excellent both at the plant and on site. We met our schedules and were ready for school opening, something we couldn’t have done using conventional methods.”

– B.B., Manager of Construction, York Region District School Board.

PROJECT OVERVIEW:

When the York Region District School Board needed to add permanent classroom space to their school to meet growing enrolment, they considered the time they needed to accomplish all the project elements, from initial design through to final commissioning, and realized that the typical on-site construction process would not meet the critical date of a September school opening. The School Board had been working with NRB for many years for temporary classroom space requirements, and knew of the inroads the company was making in first-class permanent construction so decided to find out for themselves whether the methodology was as time sensitive and efficient as the company claimed – and it was!

NO LIMITS... ONLY POSSIBILITIES

NRB Inc. 115 South Service Road W., P.O. Box 129, Grimsby, Ontario L3M 4G3 Tel: 905.945.9622 Toll Free: 800.465.7594
NRB (USA) Inc. 440 Wenger Drive, Ephrata, PA 17522 Tel: 717.733.1794 Toll Free: 877.455.2160
Web: www.nrb-inc.com **Email:** inquiries@nrb-inc.com



NRB

modular building specialists

BAYVIEW HILL ELEMENTARY SCHOOL RICHMOND HILL, ON

Building Size: 9,672 square feet
Building Start: April, 2007
Building Complete: June, 2007

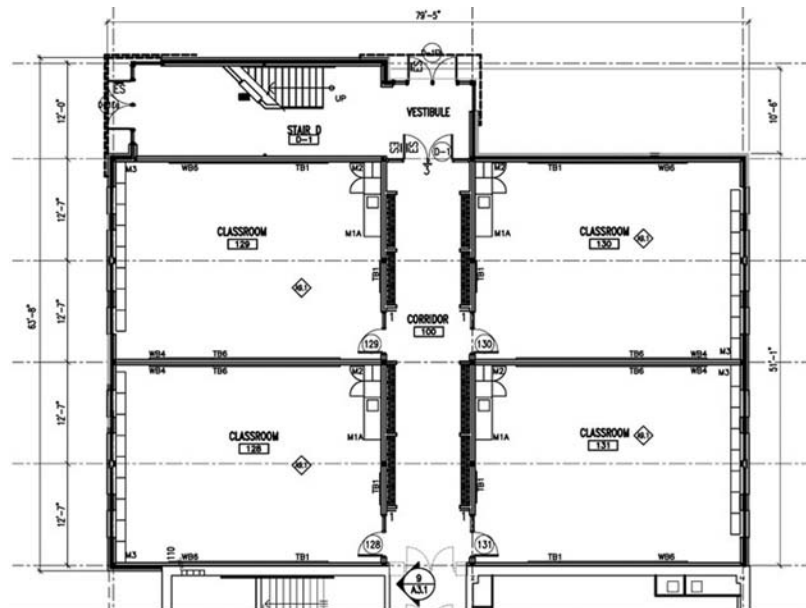
PROJECT PROFILE

Educational
Project: # 1075006

FEATURES & BENEFITS:

- NRB teamed up with Allen and Sherriff, Architects, to design and construct a building addition that could provide the permanence and performance of conventional methods, in less than half the time.
- NRB provided their 5000 series structural steel post and beam construction for maximum strength and flexibility, with concrete floors poured in the modules at the factory, to replace the typical "slab on grade" in conventional construction. These structural features, combined with the School Board's choices for architectural details, mechanical and electrical systems, created an addition that blended beautifully with the existing school, inside and out.
- Spray foam insulation was used for an optimal thermal barrier and moisture protection, and brick was applied at the site to match the existing.
- NRB's unique "build together" method assembles the building completely at the plant, ensuring fit and finish are exact keeping site erection time to a minimum. The 18 modules that comprised this school addition were completely erected in one day.
- Building the school addition off site combined with the shortened time on-site because the building was more than 80% completed, means less vehicular traffic disruption to the site and the community, better safety, and with NRB's plant waste management programs, helps divert waste from landfill!

FLOOR PLAN:



NO LIMITS... ONLY POSSIBILITIES

NRB Inc. 115 South Service Road W., P.O. Box 129, Grimsby, Ontario L3M 4G3 Tel: 905.945.9622 Toll Free: 800.465.7594
NRB (USA) Inc. 440 Wenger Drive, Ephrata, PA 17522 Tel: 717.733.1794 Toll Free: 877.455.2160
Web: www.nrb-inc.com Email: inquiries@nrb-inc.com