



**Square Footage:** 9800 square feet  
**Date of Approval to Proceed:** June 2001  
**Date of Completion at Site:** October 2001

**Medical Center Addition**  
Oldbridge, N.J.

### **Project Information:**

When a hospital in New Jersey needed to expand their Emergency Patient Care Department, they looked to modular construction for the time sensitivity and reduced site disruption it offers.

This 58' x 84' two storey addition was built completely off site with all features and finishes preinstalled, shipped in 22 sections and erected adjacent to the existing 4 storey hospital facility.

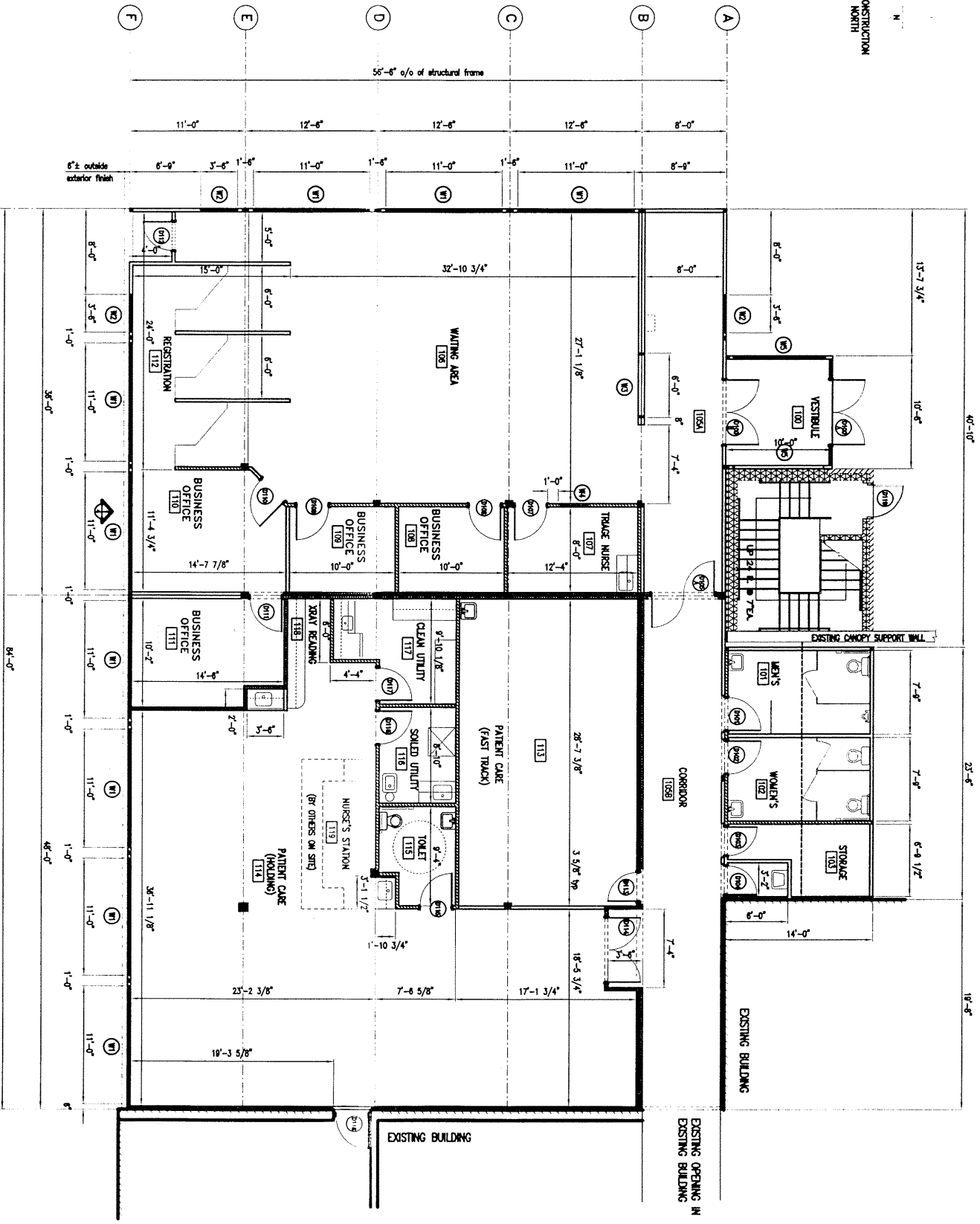
The first floor provides a Registration and Waiting Area, fast track and holding patient care areas with Nurse's Station, X-ray reading, utility rooms and bathrooms as well as several offices. The second floor is open space, earmarked for future office expansion.

The building was designed using a steel framed post and beam construction, with concrete floors pre-poured at the plant. It was then fabricated completely as a two storey structure to ensure perfect fit and alignment of all the modules both vertically and horizontally. Interior finishes include drywall, taped, filled and painted, 2' x 2' suspended acoustical ceiling tile and patterned vinyl composite tile floors.

The exterior was finished to blend with the existing building including the brick and curtain wall system.



CONSTRUCTION  
NORTH



FIRST FLOOR PLAN

JOB #N05027

3/16" = 1'-0"