



# NRB

modular building specialists

## PETRO CANADA MARKHAM, ON

Building Size: 2,340 square feet  
Building Start: September, 2004  
Building Complete: February, 2005

## PROJECT PROFILE

Retail & Hospitality  
Project: # 1045020



*A classic example of how NRB can customize standard corporate designs to suit the specific surroundings when the local municipality requires it.*

## PROJECT OVERVIEW:

Image and look are critical factors in this national convenience store chains branding program, so when the local municipality asked for a brick and stucco façade to better suit the residential community that surrounds this store, the challenge was to satisfy both sets of needs. The canopy and middle band retained the client's standard finish, while the remainder of the store was covered in red brick and stucco. Inside however, the offering and layout remain consistent with the large inviting coffee counter and easy access retail sales space.

**NO LIMITS... ONLY POSSIBILITIES**

**NRB Inc.** 115 South Service Road W., P.O. Box 129, Grimsby, Ontario L3M 4G3 Tel: 905.945.9622 Toll Free: 800.465.7594  
**NRB (USA) Inc.** 440 Wenger Drive, Ephrata, PA 17522 Tel: 717.733.1794 Toll Free: 877.455.2160  
**Web:** [www.nrb-inc.com](http://www.nrb-inc.com) **Email:** [inquiries@nrb-inc.com](mailto:inquiries@nrb-inc.com)



# NRB

modular building specialists

## PETRO CANADA MARKHAM, ON

Building Size: 2,340 square feet  
Building Start: September, 2004  
Building Complete: February, 2005

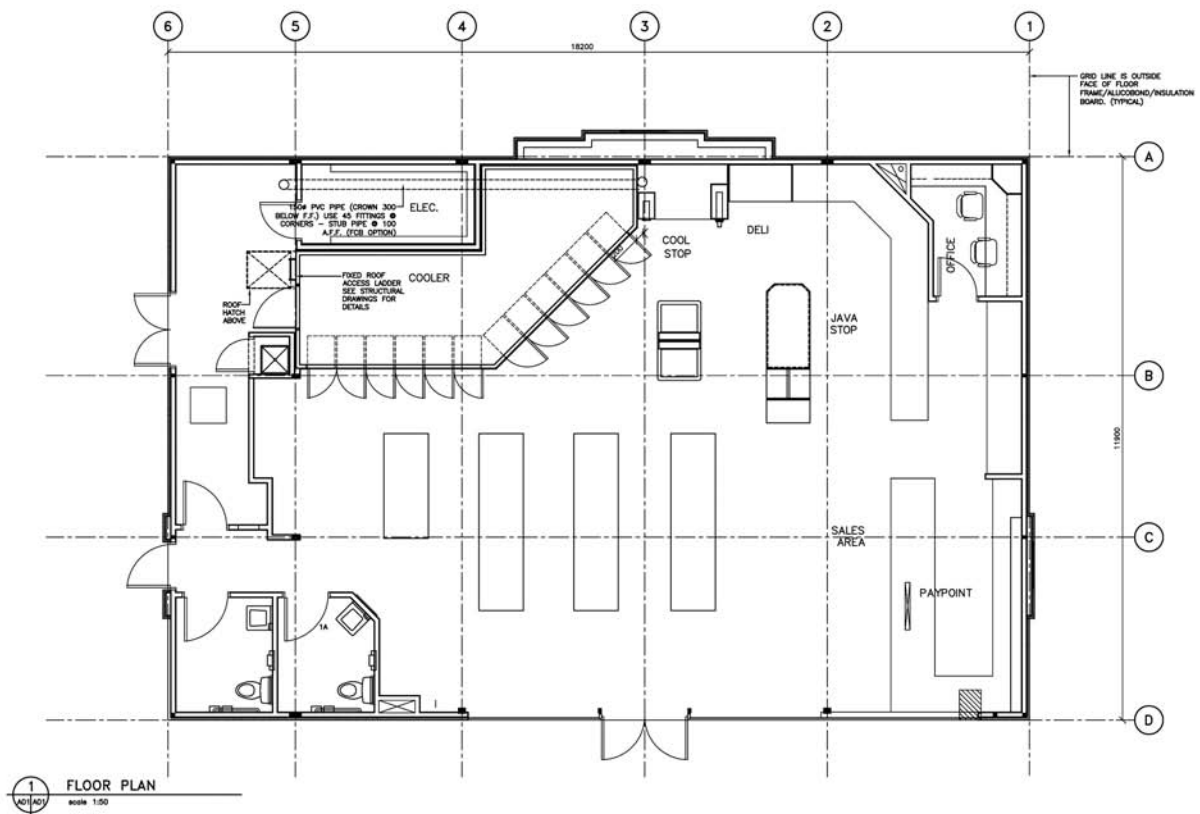
## PROJECT PROFILE

Retail & Hospitality  
Project: # 1045020

### FEATURES & BENEFITS:

- The 2,000 square foot building is just one in a program series that has multiple site locations. Taking advantage of NRB's 'winter construction', several stores are built at one time and placed into storage waiting for their final building permits and the foundations to be installed. When the site is ready, the store is already built so the company is open months sooner than with conventional construction.
- The building is constructed using NRB's '5000 series' steel and concrete design technology.
- Structural steel post and beam construction and pre-poured concrete floors give the building the permanence and performance of conventional methods.
- The interior is finished with ceramic floors, painted drywall and special acoustical ceilings.

### FLOOR PLAN:



**NO LIMITS... ONLY POSSIBILITIES**

NRB Inc. 115 South Service Road W., P.O. Box 129, Grimsby, Ontario L3M 4G3 Tel: 905.945.9622 Toll Free: 800.465.7594  
NRB (USA) Inc. 440 Wenger Drive, Ephrata, PA 17522 Tel: 717.733.1794 Toll Free: 877.455.2160  
Web: [www.nrb-inc.com](http://www.nrb-inc.com) Email: [inquiries@nrb-inc.com](mailto:inquiries@nrb-inc.com)