

**PIONEER PETROLEUMS**  
Tilsonburg, Ontario

**DETAILS**

30' x 36'  
1080 SF  
56 days to complete from production  
start to site completion



**PROJECT SUMMARY**

Post and beam structural steel construction with 3' thick concrete floors provide ease of shipping and installation of this 2-module structure.

All exterior and interior walls consist of wood studs and R12 batt insulation. Roof and floors are insulated with R20 value.

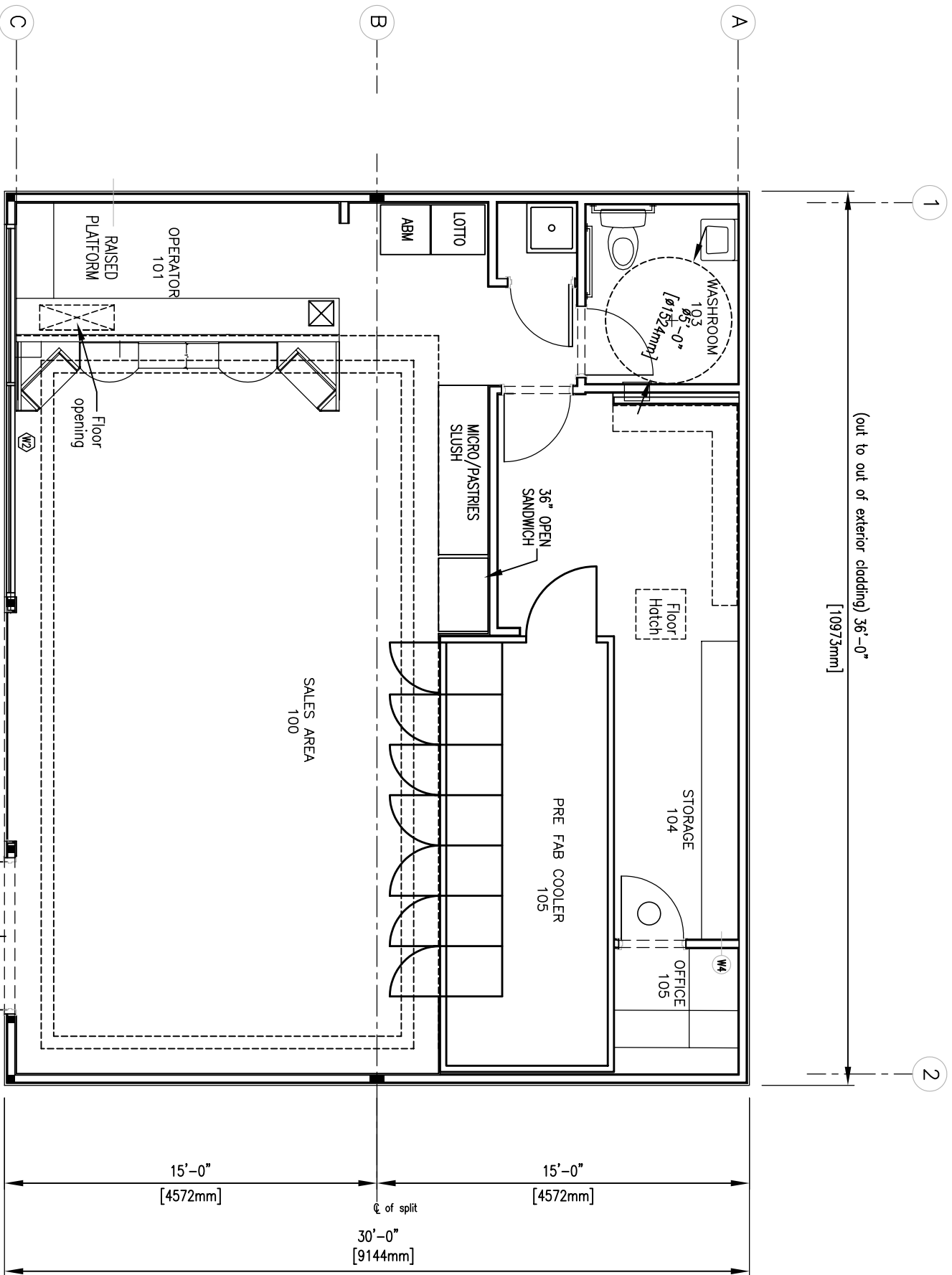
Interior and exterior finishes are similar to other Pioneer buildings, which maintain their corporate image.

Floor plan incorporates a large sales area with pay point located away for the entrance doors, encouraging impulse purchases.



**A FUNCTIONAL LAYOUT IS KEY  
TO EFFECTIVE MARKETING**





FLOOR PLAN

SCALE: 1/4" = 1'-0"