



**Regional Municipality  
of Peel  
Homeless Shelter**

**Size: 98'0" x 130'0" (L Shaped)**  
**Square Footage: 10,764**  
**Days to Complete: 58**  
(From Production Start to Date Occupied)

**Project Information:**

This custom steel framed complex combines administration space with residential quarters for the homeless (both men and women). Each of the 25 modules were engineered and built with structural steel and a pre-poured concrete floor system.

Features Include:

- 13'0" high vaulted Multi-Purpose Room/Hall located in the centre of the complex.
- Exterior wall finish is a combination of "Granex" stone aggregate panels and prepainted steel siding.

This structure was a complete turnkey package performed by NRB Inc, including foundation, HVAC, plumbing, paving and final service connections. All features and finishes were installed at the manufacturing plant so site time was kept to a minimum.



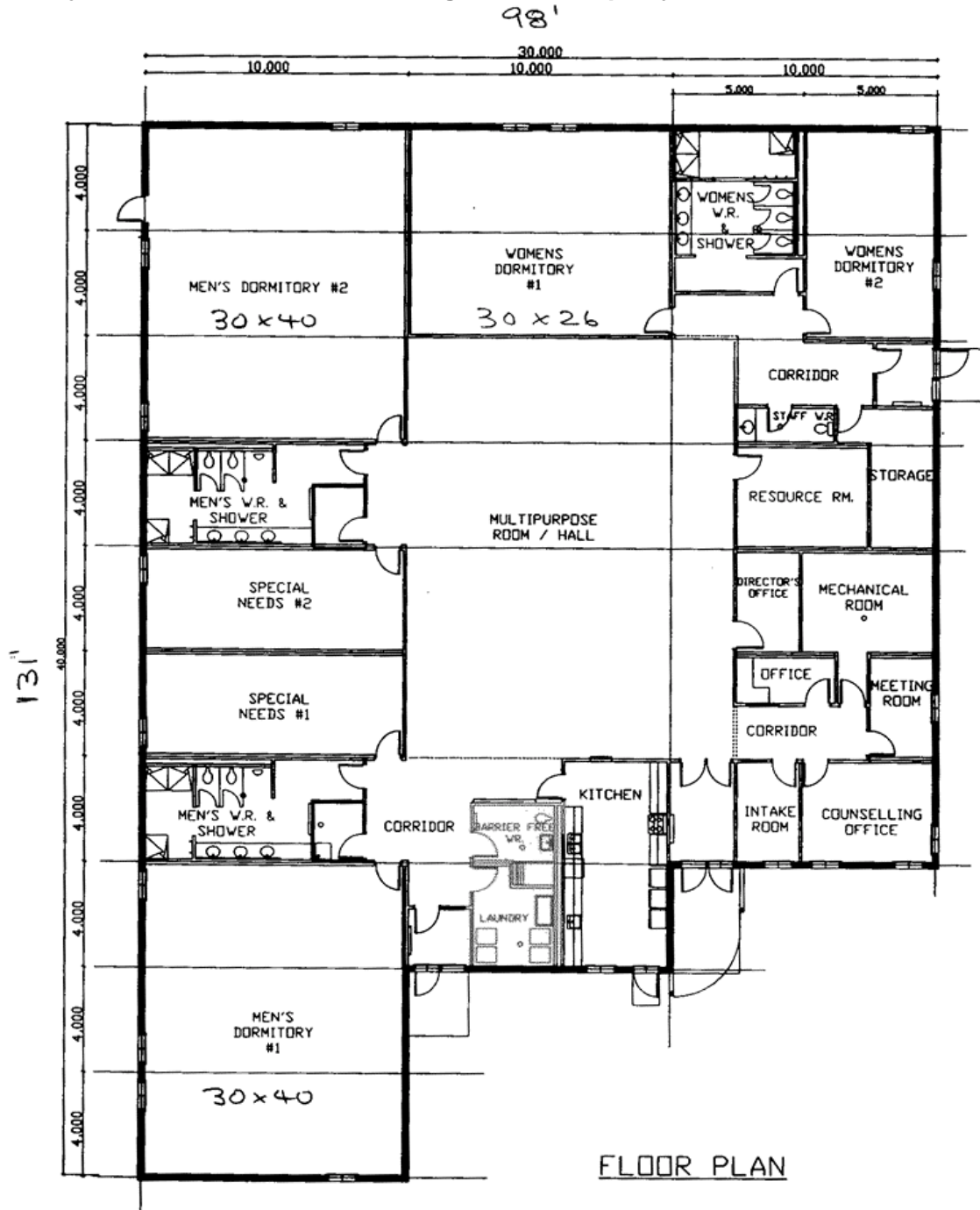
**NRB Modular Buildings. Ready when you are.**



NRB Inc. Modular Building Systems

# Floor Plan

Project #N05025: Institutional, Regional Municipality of Peel Homeless Shelter



NRB Inc., 115 South Service Rd. W., PO Box 129, Grimsby, Ontario, Canada L3M 4G3  
Telephone: 905-945-9622 Toll Free: 1-888-227-5672 Fax: 905-945-2003 Fax Toll Free: 1-888-232-9672  
Internet: [www.nrb-inc.com](http://www.nrb-inc.com) E-mail: [inquiries@nrb-inc.com](mailto:inquiries@nrb-inc.com)