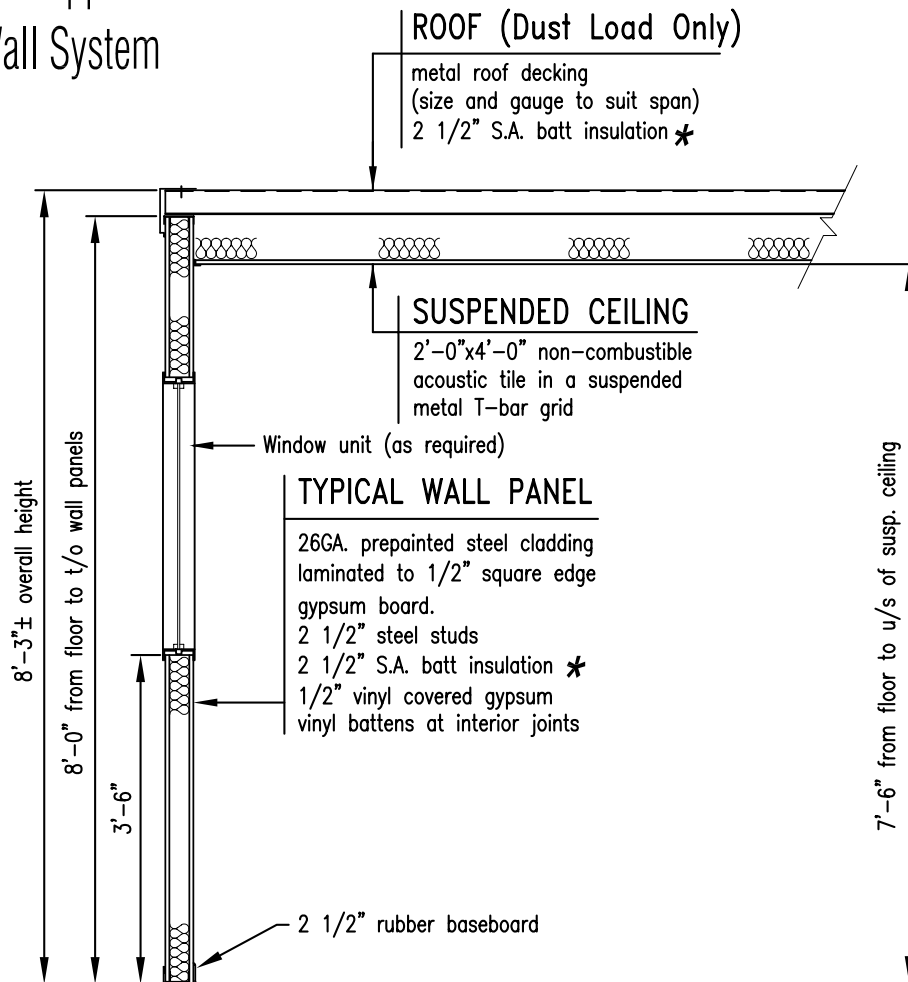


# NCP-1000

## Detail

- Steel Frame / Non-Combustible Construction
- For Interior Applications
- 3 1/2" Wall System



A complete panelized floor system is available in steel or wood framing, with optional insulation for sound attenuation.

\* **NOTE:**  
ALL INSULATION SHALL BE  
SOUND ATTENUATION BATTS



# NRB

modular building specialists

webpage: [www.nrb-inc.com](http://www.nrb-inc.com)

Phone: 1-800-465-7594

Fax: 1-888-232-9672