

# IN STOCK CARWASH



## BASIC OUTLINE SPECIFICATIONS AND FEATURES

### Building Structure

- Overall size 25' X 51' X13'Ht (approx)
- Engineered structural steel post and beam construction
- 1 ½" metal deck with 3" concrete floor in equipment room (carwash floor poured on site)
- 3 5/8" steel stud walls
- 1 ½" metal roof deck with 2 ply bituminous roof
- R20 roof and R12 wall insulation

### Finishes

- FP1 architectural aluminium exterior wall cladding system (Or your choice of materials)
- ½" clear glass with silicone
- (2) 10' x 10' Air Lift Overhead doors
- Seamless chemical resistant finish over ½" "denshield" tile backer on wash bay walls and ceiling
- Seamless painted walls in mechanical /electrical rooms on ½" gypsum board

### Systems

- Electrical service as required by carwash equipment
- Waterproof metal halide lighting fixtures in wash bay
- Fluorescent lighting in mechanical/ electrical rooms
- Exit and emergency lighting
- Fan forced gas fired unit heaters in wash bay
- Wall mounted sleeve vents
- Water meter cabinet (optional)
- Floor and roof drains



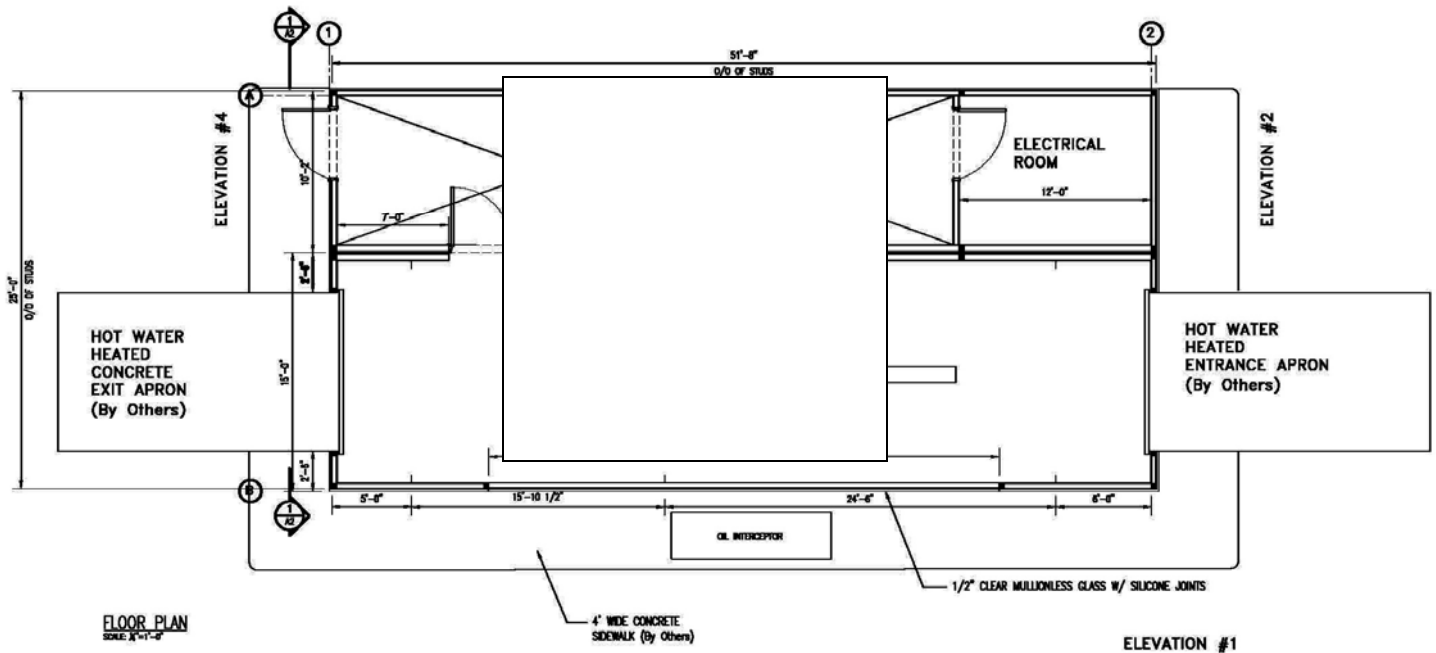
**NRB**

modular building specialists

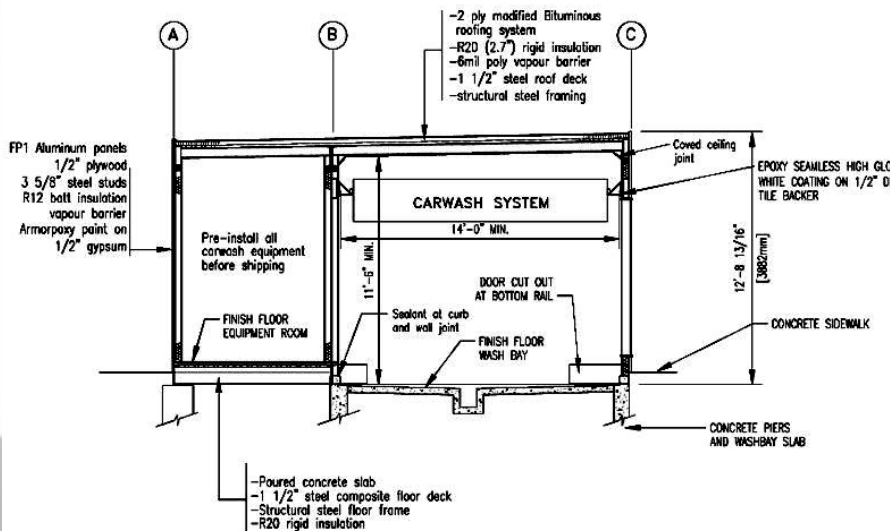
**NO LIMITS... ONLY POSSIBILITIES**



## FLOOR PLAN



## CROSS SECTION



NRB's modular car wash is shipped in 2 sections: Wash bay, and Mechanical room. Mechanical room comes complete with 3" concrete floor already pre-installed for equipment installations in NRB yard. Pier or strip footings are required. Wash bay will require footings and floor slab to be poured on site as part of the site contractor's package.

# Call to View...