



# NRB

modular building specialists

## SHELL CANADA TORONTO, ON

Building Size: 1,715 square feet  
Building Start: June, 2005  
Building Complete: September, 2005

## PROJECT PROFILE

Retail/Hospitality  
Project: # 1055011



*With very tight space constraints on urban sites, modular construction was the practical solution to minimize time and site congestion.*

## PROJECT OVERVIEW:

Demolition and clean up required on an existing site is a real time concern. By using modular construction all aspects of the store construction can be inspected for quality and corporate details off-site, ensuring maximum completion before even hitting the actual site. Site disruption and debris are minimized, allowing a cleaner, less congested area available for underground work and canopy installations.

**NO LIMITS... ONLY POSSIBILITIES**

**NRB Inc.** 115 South Service Road W., P.O. Box 129, Grimsby, Ontario L3M 4G3 Tel: 905.945.9622 Toll Free: 800.465.7594  
**NRB (USA) Inc.** 440 Wenger Drive, Ephrata, PA 17522 Tel: 717.733.1794 Toll Free: 877.455.2160  
Web: [www.nrb-inc.com](http://www.nrb-inc.com) Email: [inquiries@nrb-inc.com](mailto:inquiries@nrb-inc.com)



# NRB

modular building specialists

## SHELL CANADA TORONTO, ON

Building Size: 1,715 square feet  
Building Start: June, 2005  
Building Complete: September, 2005

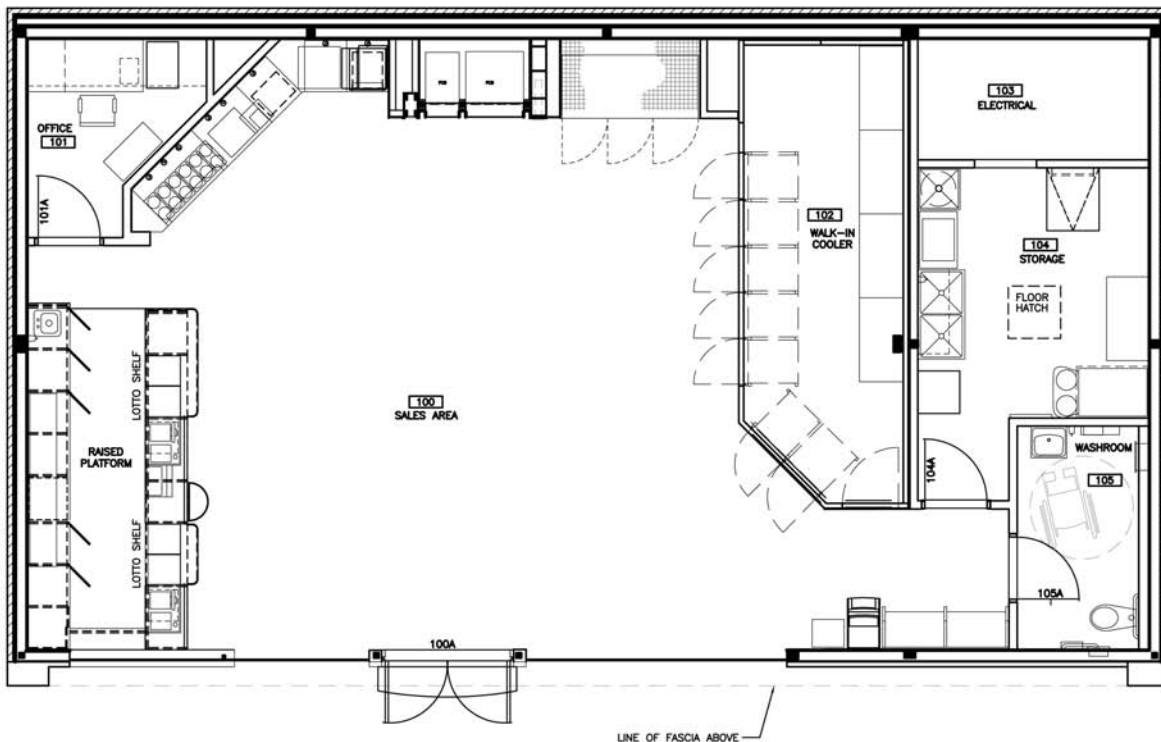
## PROJECT PROFILE

Retail/Hospitality  
Project: # 1055011

### FEATURES & BENEFITS:

- Building construction began at NRB in early summer, allowing the building to be substantially completed well before it was required on site. The building was then stored at NRB, waiting for city permitting for site work to begin.
- Once foundations were completed on site, the finished building was split into 3 sections, transported on flatbed trucks and installed by crane.
- NRB's built-in lifting eyes allowed all 3 sections to be placed on foundations in a matter of hours.
- Building was completed within 2 weeks, concurrent with canopy finish, landscaping and asphalt paving. The new corporate store was stocked and ready for opening in record time.
- All aspects of corporate branding and image were reflected in the building design.

### FLOOR PLAN:



**NO LIMITS... ONLY POSSIBILITIES**

NRB Inc. 115 South Service Road W., P.O. Box 129, Grimsby, Ontario L3M 4G3 Tel: 905.945.9622 Toll Free: 800.465.7594  
NRB (USA) Inc. 440 Wenger Drive, Ephrata, PA 17522 Tel: 717.733.1794 Toll Free: 877.455.2160  
Web: [www.nrb-inc.com](http://www.nrb-inc.com) Email: [inquiries@nrb-inc.com](mailto:inquiries@nrb-inc.com)